

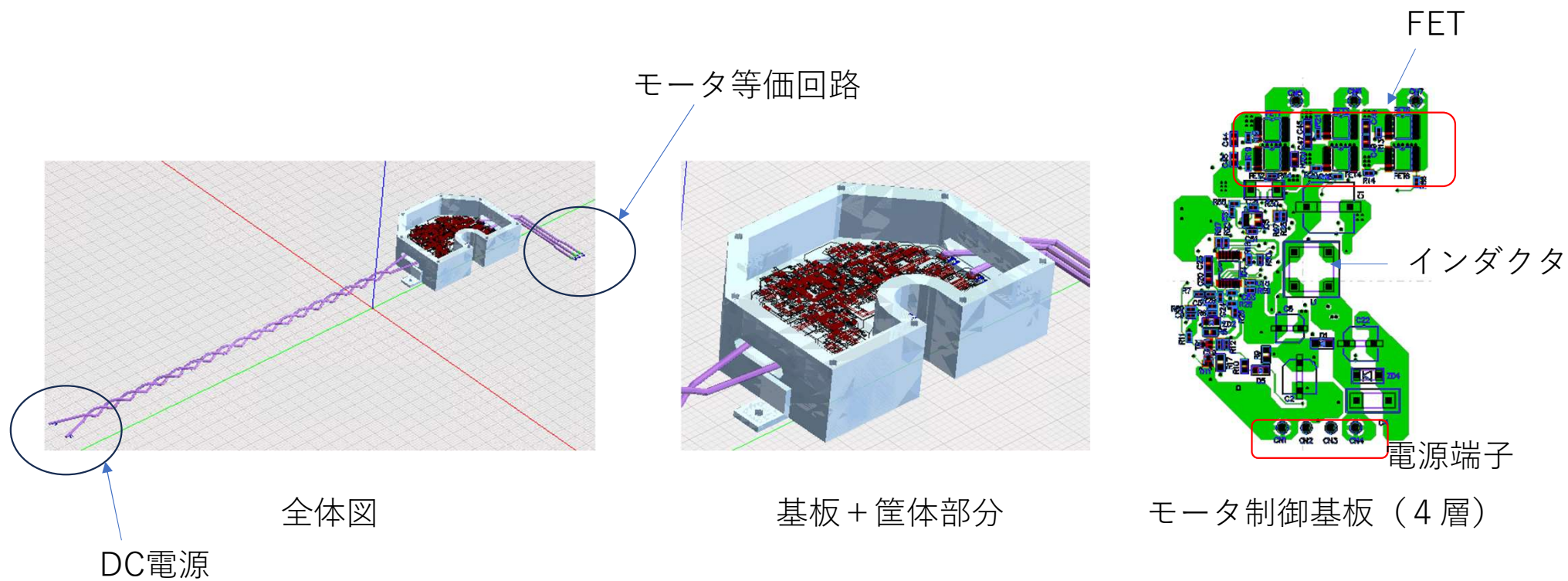
S-NAP PCB 解析サンプル

3層誘導モータサンプル

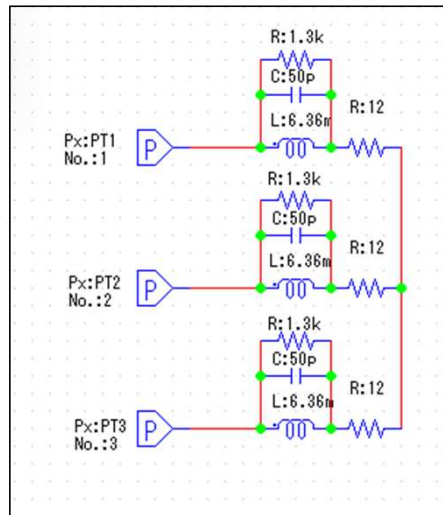
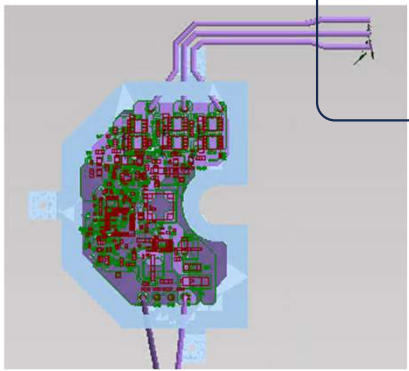
伝導ノイズ

200Hz/ck=15kHz

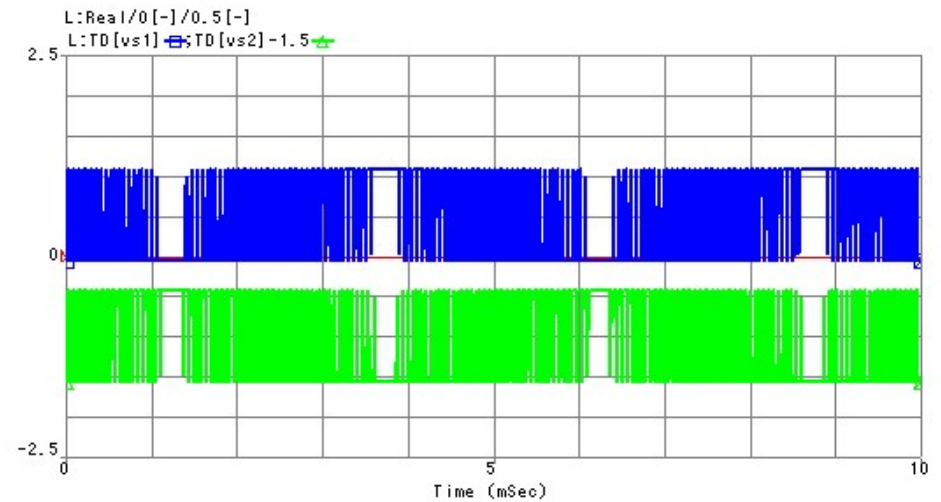
全体構造と基板



スイッチング信号とモータ等価回路



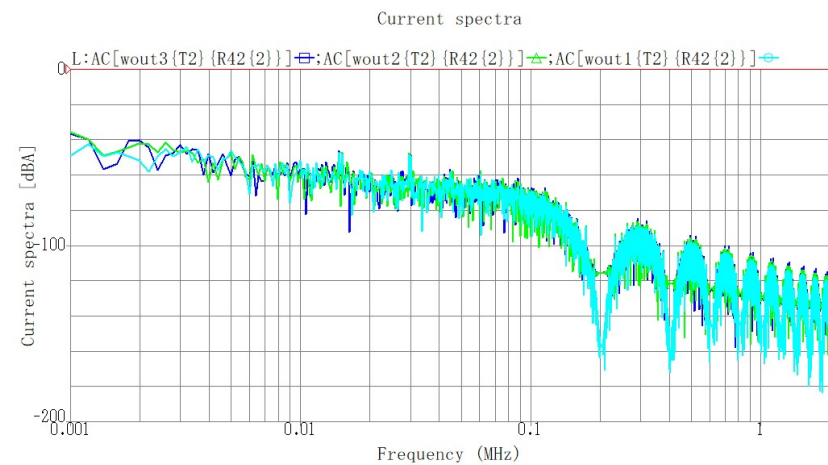
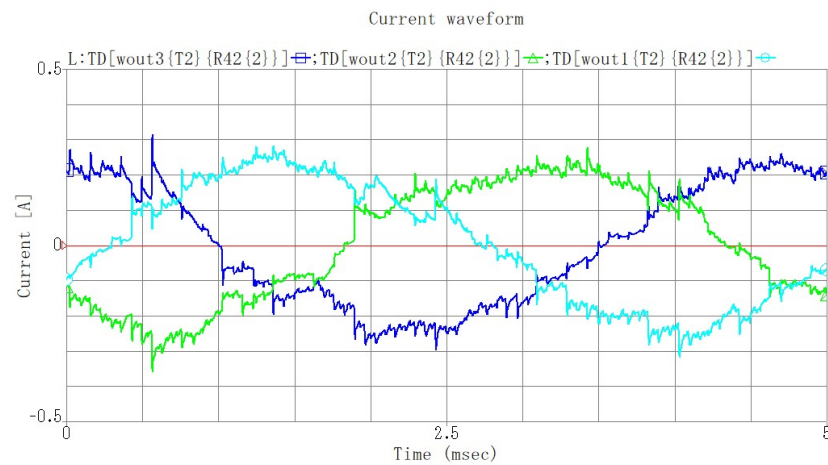
モータ等価回路



スイッチング信号 U相 15kHz

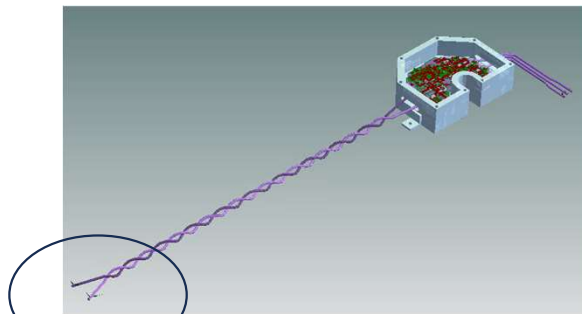
モータ波形とスペクトル

トランジェント解析

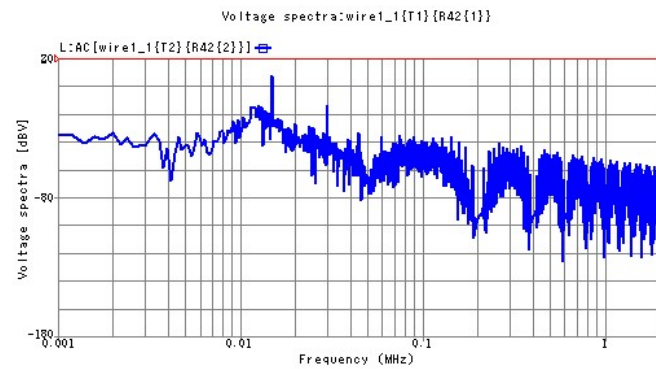
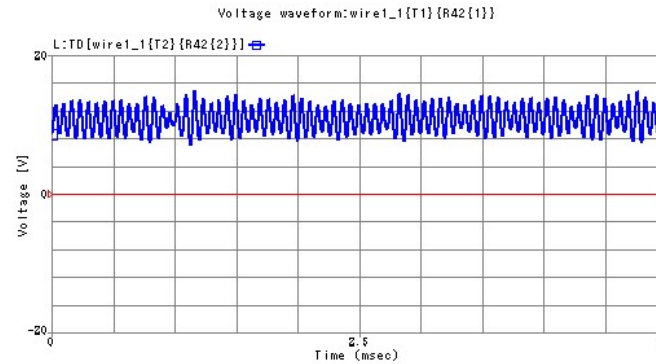


各相電流波形とスペクトル

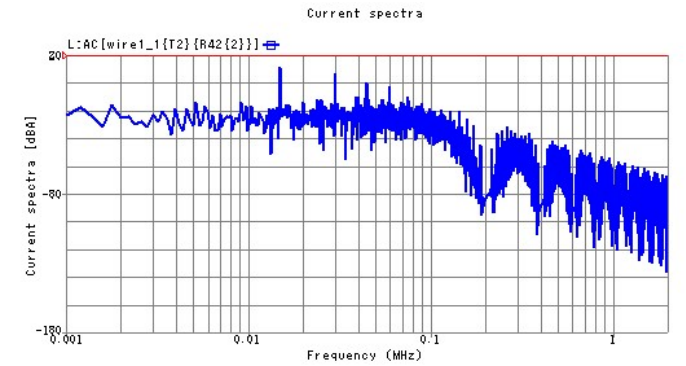
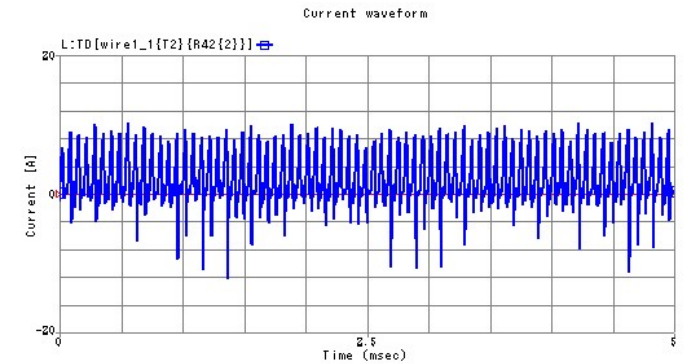
伝導ノイズ (電源端子)



観測点

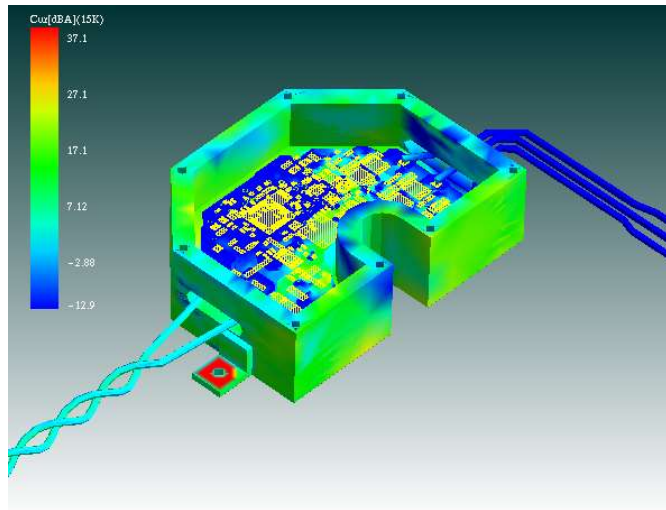


電圧波形とスペクトル

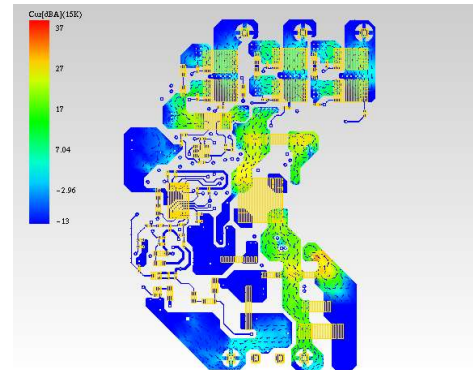


電流波形とスペクトル

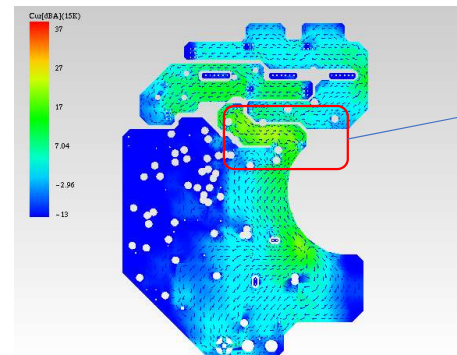
電流分布 (@15kHz)



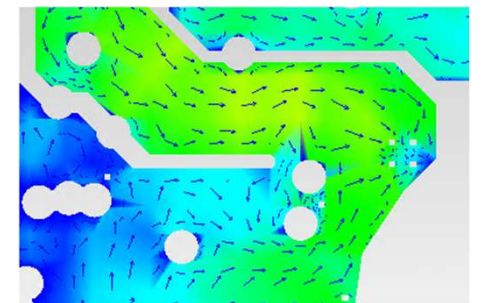
全体図



L1層



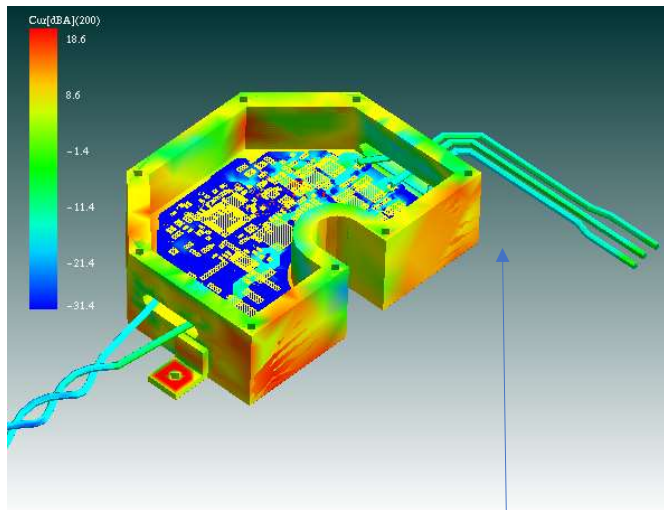
L2層



基板の電流分布とベクトル
(L1、L2層のみ表示)

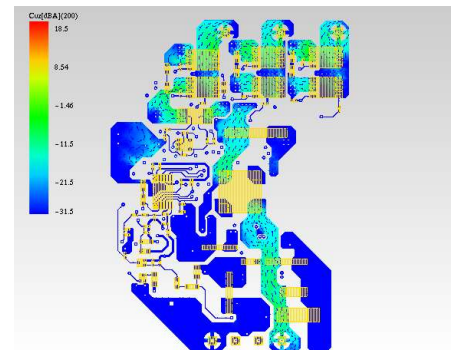
電流分布 (@200Hz)

※超低周波での電磁界解析も可能

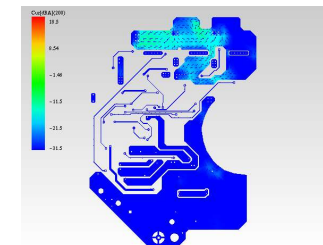


全体図

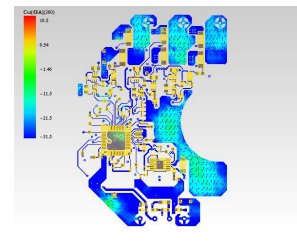
モータの電流が確認できる



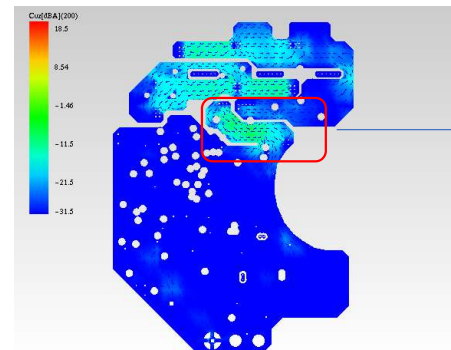
L1層



L3層



L4層



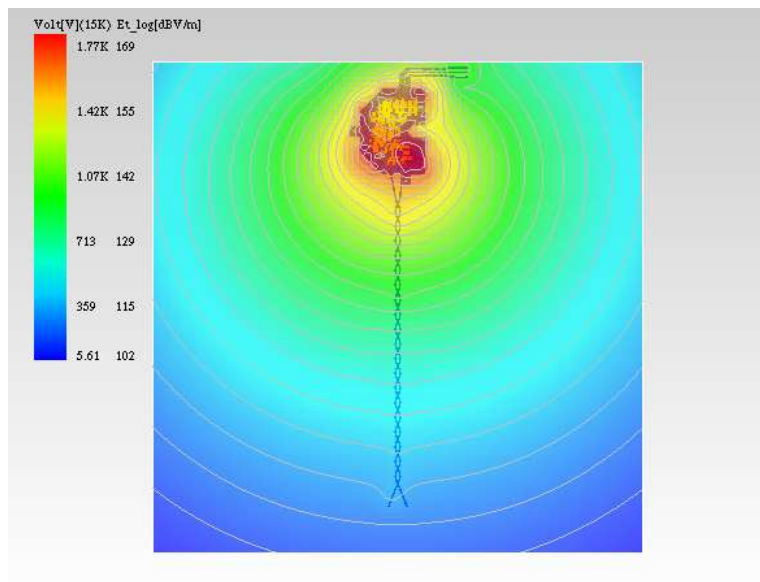
L2層



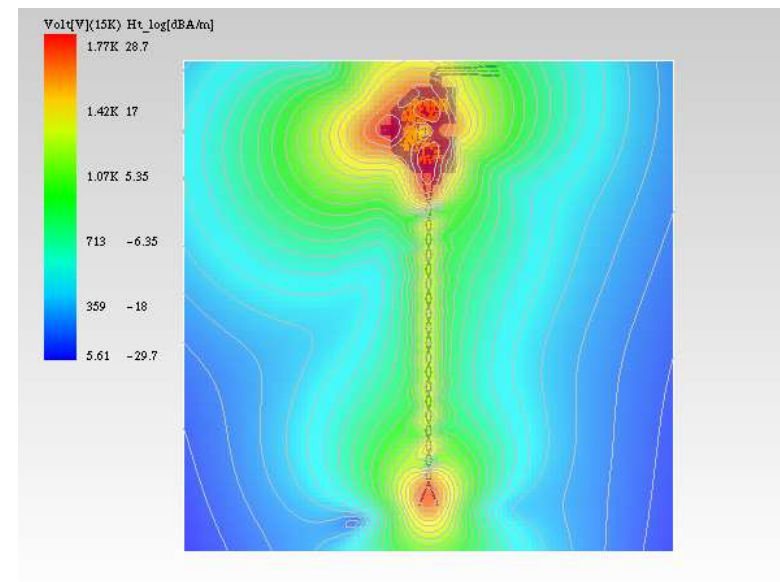
近傍電磁界分布 (@15kHz)

観測シート (mm): center=(33.5,-134,80), size=500mm□

15kHz



電界分布



磁界分布